

APPENDIX VII

CONTAINER STORAGE AREA CONCRETE PAD
ENGINEERING EVALUATION

FOR

SIEMENS INDUSTRY, INC.

PARKER REACTIVATION FACILITY

PARKER, ARIZONA

Revision 1
April 2012

SIEMENS WATER TECHNOLOGIES CORP.
PARKER, AZ

WAREHOUSE CONTAINMENT
INDOORS

5" HIGH WALL (CONTAINMENT WALL & FOUNDATION WALL)

AREAS:	L	W	H	VOLUME CF	VOLUME GALLONS
	73.54	42.17	0.42	1292	9,665
	51.50	9.33	0.42	200	1,498
	51.50	26.00	0.42	558	4,173
	21.54	13.00	0.42	117	873
			TOTAL:	2167	16,208

PYRAMIDAL VOLUMES:

(SEE DRAWING D100601-S-3V, Rev "B")
 FLOOR SLOPES TO DRAIN:
 FLOOR SLOPE = 1/8" IN 12" OVER APPR. 19.375'
 FLOOR DEPTH AT TOP OF TRENCH = 2.375" = 0.2'
 TRENCH VOLUME NOT INCLUDED.

CONSIDER EACH SLOPED END AS 1/2 OF A PYRAMID,
 (BASE UP) 1 END PARTIALLY COVERED WITH WALL.
 PYRAMID 2.375" HIGH, WITH BASES 38.75' ON A SIDE.
 ESTIMATE AT 1.5 PYRAMIDAL VOLUMES, $V = 1/3 AH$

QUAN	1/3	L	H	CF	GALLONS
1.5	0.33	38.75	0.20	150	1,123

BETWEEN PYRAMIDAL ENDS:

40' + 32' (APPROX.) = 72' OF A TRIANGULAR SHAPED VOLUME
 2.275" HIGH TRIANGULAR AREA WITH A 38.75' WIDE BASE
 $V = 1/2 WHL$

QUAN (L)	1/2	W	H	CF	GALLONS
72	0.50	38.75	0.20	279	2,087

TOTAL CONTAINMENT VOLUME, GALLONS: **19,418**

REQUIRED VOLUME, GALLONS: **10,000**

LuMar Engineering

Memorandum

To: Mike Troup
From: J. Dunlea

16 January, 1994

Subject: Westates Carbon Inc.
Carbon Reactivation Facility, Parker, AZ.
Part B Certification.

The followings items are statements and notes required for the application. The items numbers reference your "Regulatory completeness checklist".

PART D - PROCESS INFORMATION

Warehouse Storage Area:
=====

D-1a(1): Basic Design Parameters.

Base design and materials of construction:

The warehouse slab-on-grade is designed for secondary containment. The construction is 5" thick reinforced concrete (3000 psi) slab on 2" sand on 6 mil visqueen vapor barrier on 4" compacted gravel base. All construction and control joints in the slab are sealed with a sealant.

Eng. evaluation of structural integrity of base:

The slab is designed for warehouse storage use and light forklift traffic.

D-1a(2): Description of how design promotes drainage.....:

Grading of base:

The slab is sloped 1/8"/ft. to trench drains.

Drainage design and removal system:

The slab slope is from the perimeter to the interior trench drains (1' X 1' min.). The trench drains slope to a sump (3' X 3' X 3') for removal. Any spills within the containment area will drain to the sump. In addition a 5" high curb is provided continuously around the entire building.

GENERAL NOTES

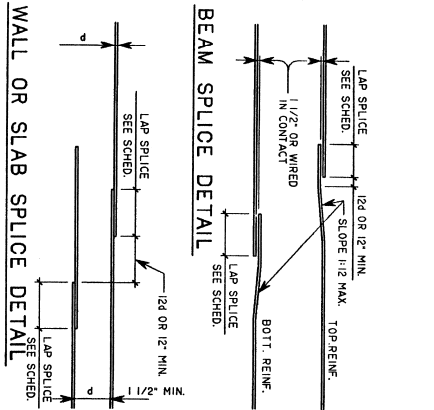
- GENERAL**
- THE CONTRACTOR SHALL VERIFY ALL DIMENSIONS AND JOB CONDITIONS BEFORE STARTING WORK. NOTIFY THE ENGINEER OF ANY DISCREPANCIES. VERIFY ALL REQUIRED CLEARANCES AND TAKE MEASUREMENTS FOR BUILD-IN ITEMS ON THE JOB SITE.
 - NOTES AND DETAILS ON THE DRAWINGS TAKE PRECEDENCE OVER THESE GENERAL NOTES AND THE TYPICAL DETAILS.
 - DIMENSIONS TAKE PRECEDENCE OVER SCALES SHOWN ON THE DRAWINGS.
 - ALL WORK SHALL CONFORM TO THE MINIMUM STANDARDS OF THE FOLLOWING:
 - * BUILDING CODE - IBC 1998 EDITION.
 - * ANY PORTION OF THE WORK.
 - * CODES AND STANDARDS (LATEST EDITION) LISTED IN THESE NOTES AND SPECIFICATIONS.
 - COORDINATE WITH THE MECHANICAL, PLUMBING, AND ELECTRICAL, METAL BUILDING AND EQUIPMENT DRAWINGS.
 - THE STRUCTURAL DRAWINGS AND SPECIFICATIONS DO NOT INDICATE THE METHOD OF CONSTRUCTION. THE CONTRACTOR SHALL PROVIDE BRACING AND SHORING FOR LOADS DUE TO CONSTRUCTION EQUIPMENT, ETC.
- EQUIPMENT AND OPENING LOCATIONS**
- VERIFY ALL DIMENSIONS LOCATING MECHANICAL EQUIPMENT, OPENINGS AND SUPPORT BEAMS FOR EQUIPMENT. COORDINATE WITH EQUIPMENT SUPPLIERS, MECHANICAL CONTRACTOR AND MECHANICAL DRAWINGS. VERIFY CLEARANCES TO EXISTING AND NEW CONSTRUCTION.
 - COORDINATE SIZE OF EACH OPENING WITH MECHANICAL CONTRACTOR AND MECHANICAL DRAWINGS. VERIFY CLEARANCES TO EXISTING AND NEW CONSTRUCTION.
 - DO NOT FABRICATE STEEL UNTIL ALL NECESSARY VERIFICATION AND COORDINATION IS COMPLETED.
 - VERIFY EQUIPMENT AND METAL BUILDING ANCHOR BOLT LOCATIONS, SIZES AND DIMENSIONS WITH CERTIFIED DRAWINGS.
- FOUNDATIONS**
- FOR SUBGRADE CONDITIONS AND FOUNDATION RECOMMENDATIONS REFER TO REPORT NO. 91-1008 DATED 11/11/81 PREPARED BY GEOTECHNICAL AND ENVIRONMENTAL CONSULTANTS INC.
 - FOUNDATION DESIGN BASED ON:
 - MIN. DEPTH TO BOTTOM OF FOOTING = 18 IN.
 - BACKFILL FOR FOOTINGS AND UTILITY TRENCHES WITHIN FOOTING AREA SHALL BE MECHANICALLY COMPACTED IN LAYERS (STANDARD PROCTOR).
 - REMOVE ALL ABANDONED FOOTINGS, UTILITIES, ETC., THAT INTERFERE WITH NEW CONSTRUCTION. NEW FOOTINGS MUST BE EXTENDED INTO EXISTING SOILS AS SPECIFIED IN THE SOILS REPORT.
 - RECOMMENDATIONS CONTAINED IN THE SOILS REPORT ARE PART OF THE SUBGRADE. ALL EXCAVATIONS FOR FOOTING PRIOR TO PLACING CONCRETE SHALL BE APPROVED BY SOILS ENGINEER.
 - COMPLY WITH OSHA REQUIREMENTS AND PROVIDE FOR DESIGN AND CONSTRUCTION OF ALL EXCAVATION, SHORING, AND SHORING BEHIND TO SAFELY MAINTAIN EXCAVATIONS.
- REINFORCING STEEL**
- DETAIL AND PLACE ALL REINFORCING STEEL IN ACCORDANCE WITH THE SPECIFICATIONS AND THE MANUAL OF STANDARD PRACTICE FOR DETAILING REINFORCED CONCRETE STRUCTURES (ACI 315).
 - REINFORCING BARS: ASTM A-615 GRADE 60, WELDED WIRE FABRIC: ASTM A-185.
 - BEND BARS COLD. SPlice REINFORCING ONLY WHERE INDICATED ON THE DRAWINGS.
 - MAKE JOINTS BETWEEN FOOTINGS AND WALLS OR COLUMNS THE SAME GRADE, SIZE AND SPACING (OR NUMBER) AS THE VERTICAL BARS IN THE WALL OR COLUMN.
 - LAP WELDED WIRE FABRIC 6 INCHES OR ONE FULL WIRE SPACING, WHICHEVER IS LARGER.
 - WELDING OF REINFORCING BARS, WHERE INDICATED, SHALL BE IN ACCORDANCE WITH A.C.I. 4.02.
- CONCRETE**
- CONCRETE CONSTRUCTION SHALL CONFORM TO THE BUILDING CODE REQUIREMENTS FOR REINFORCED CONCRETE (ACI 318) AND ACI 301.
 - SCHEDULE OF STRUCTURAL CONCRETE 28-DAY STRENGTHS AND TESTS:
 - FOOTINGS: 3000 PSI (DESIGN F_c=2500 PSI)
 - SLABS ON GRADE: 3000 PSI
 - (NO SPECIAL INSPECTION IS REQUIRED FOR CONCRETE WORK)
 - PORTLAND CEMENT: ASTM C-150, TYPE 1 OR TYPE 11.
 - USE TYPE 11 CEMENT FOR ALL SLABS ON GRADE.
 - AGGREGATE FOR HARDENED CONCRETE: ASTM C-33.
 - TRANSIT MIX CONCRETE: ASTM C-94.
 - PLACEMENT, VIBRATION AND CURING OF CONCRETE: CONFORM TO ACI 301 THROUGHOUT CONCRETE SURFACES AGAINST WHICH FRESH CONCRETE IS TO BE PLACED.
 - CLEAR COVERAGE OF CONCRETE OVER OTHER REINFORCING BARS SHALL BE AS FOLLOWS:
 - A. CONCRETE CAST AGAINST EARTH: 3 INCHES
 - B. CONCRETE EXPOSED TO EARTH OR WEATHER: 2 INCHES
 - C. CONCRETE CAST AGAINST WEATHER: 1 1/2 INCHES
 - D. CONCRETE NOT EXPOSED TO EARTH OR WEATHER: 1 1/2 INCHES
 - ALL REINFORCING BARS, ANCHOR BOLTS AND OTHER CONNECTIONS SHALL BE WELL SECURED IN POSITION PRIOR TO POURING CONCRETE. VERIFY ANCHOR BOLT SIZES AND LOCATIONS WITH CERTIFIED DRAWINGS AND EQUIPMENT DRAWINGS.
 - PROVIDE SLEEVES FOR PLUMBING AND ELECTRICAL OPENINGS BEFORE PLACING CONCRETE. DO NOT CUT ANY REINFORCING UNLESS SHOWN ON THE DRAWINGS. PROVIDE SLEEVES IN ADVANCE OF CONDITIONS NOT SHOWN ON THE DRAWINGS.
 - PROTECTING CORNERS OF BEAMS, WALLS, COLUMNS, ETC., SHALL BE FORMED WITH A 3/4" CHAMFER, UNLESS OTHERWISE NOTED.
 - PROVIDE A LIGHT BRICK, NONSKID, FINISH ON ALL INTERIOR AND EXTERIOR SLABS.
 - EXPANSION JOINT FILLER: APPROVED, ASPHALT IMPREG-NATED PREMOULDED FILLER, ASTM D1751.
 - JOINT SEALANT: SUBMIT MANUFACTURERS DATA FOR APPROVAL. USE 2-PART GUN GRADE POLYURETHANE SEALANT FOR BEAMS, WALLS, COLUMNS, ETC. SEALANT SHALL BE USED FOR INTERIOR JOINTS. SEALANT SHALL BE USED FOR EXTERIOR JOINTS. SEALANT SHALL BE USED FOR INTERIOR JOINTS. SEALANT SHALL BE USED FOR EXTERIOR JOINTS. SEALANT SHALL BE USED FOR INTERIOR JOINTS. SEALANT SHALL BE USED FOR EXTERIOR JOINTS.
 - STRUCTURAL STEEL
 - STRUCTURAL STEEL SHALL BE DETAIL, FABRICATED, AND ERECTED IN ACCORDANCE WITH THE SPECIFICATION FOR THE BUILDINGS (LATEST EDITION).
 - STRUCTURAL STEEL SHAPES AND PLATES: ASTM A-36
 - STEEL PIPES: ASTM A-53 GRADE B
 - BOLTS: ASTM A-325N
 - WELDING: E70XX ELECTRODES, STRUCTURAL WELDING CODE (AWS D1.1-84).
 - BOLT HOLES SHALL BE 1/16" IN LARGER THAN NOMINAL DIA. OF BOLT USED, EXCEPT AS NOTED.
 - SET CORNER ANCHOR BOLTS WITH TEMP. PLATES, GROUT OR EPOXY. ANCHOR BOLTS WITH FASTENERS SHALL BE E70XX OR AS APPROVED.
 - SET DESIGN AND NATURAL CAMBER IN BEAMS UP.
 - CUT ALL OPENINGS AND HOLES, REQUIRED FOR OTHER TRADES, IN THE SHOP. DO NOT FIELD CUT ANY OPENINGS OR HOLES WITHOUT PRIOR APPROVAL FROM THE ENGINEER.
 - FOR WELDS NOT DETAILED, USE CONTINUOUS FILLET WELDS AND SIZE PER AISC TABLE 1.17.2A.
 - STRUCTURAL STEEL SURFACES ENCASED IN CONCRETE OR MASONRY SHALL BE LEFT UNPAINTED.
 - PAINT ALL EXPOSED STEEL WITH SHOP PRIMER AND FINISH COAT. HOT DIP GALVANIZE, AFTER FABRICATION, ALL STEEL GRATING AND EMBEDDED TRENCH ANGLE.
 - SUBMIT SHOP DRAWINGS FOR ENGINEER REVIEW.

SCHEDULE 'A'

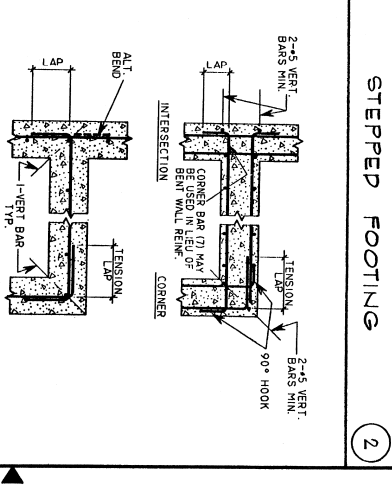
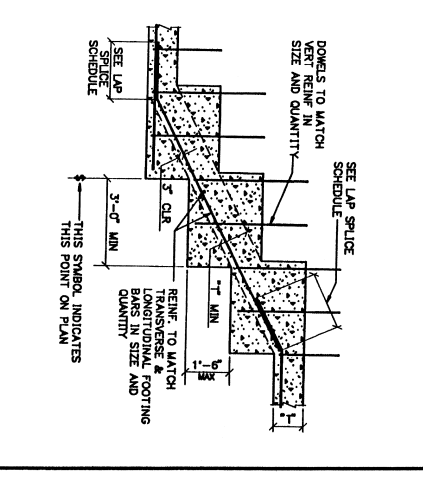
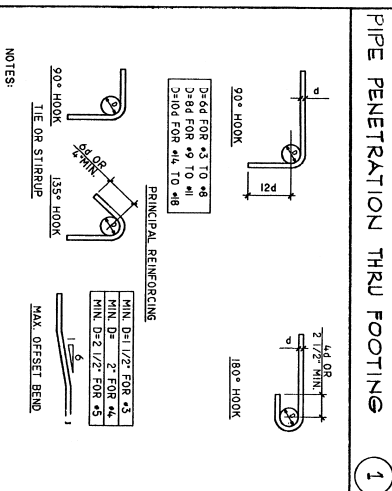
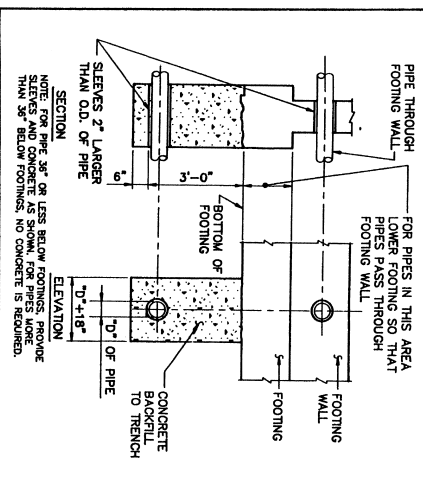
LOCATION IN STRUCT.	CONC. STEEL	BAR SIZE	1	2	3	4	5	6	7	8	9	10	11
FOOTINGS	40	12	12	13	17	23	30	38	48	58	68	78	88
SLABS ON GRADE	40	16	16	20	25	34	45	57	72	89	107	124	142
WALLS	40	16	16	20	24	30	39	49	63	77	94	111	129
BEAMS	40	16	16	20	24	30	39	49	63	77	94	111	129
CEILING	40	16	16	20	24	30	39	49	63	77	94	111	129
FLOOR	40	16	16	20	24	30	39	49	63	77	94	111	129
ROOF	40	16	16	20	24	30	39	49	63	77	94	111	129

SCHEDULE 'B'

LOCATION IN STRUCT.	CONC. STEEL	BAR SIZE	1	2	3	4	5	6	7	8	9	10	11
FOOTINGS	40	12	12	13	17	23	30	38	48	58	68	78	88
SLABS ON GRADE	40	16	16	20	25	34	45	57	72	89	107	124	142
WALLS	40	16	16	20	24	30	39	49	63	77	94	111	129
BEAMS	40	16	16	20	24	30	39	49	63	77	94	111	129
CEILING	40	16	16	20	24	30	39	49	63	77	94	111	129
FLOOR	40	16	16	20	24	30	39	49	63	77	94	111	129
ROOF	40	16	16	20	24	30	39	49	63	77	94	111	129



- REGULAR WEIGHT CONCRETE REINFORCING SCHEDULE**
- NOTES:
- THE SCHEDULE ON THIS SHEET APPLY TO REGULAR WEIGHT CONCRETE, 145-150 PCU FT.
 - THE REINFORCING IS TO BE SCHEDULED AS SHOWN IN MORE THAN 50% OF THE LENGTH OF THE MEMBER. THE REMAINING 50% OF THE LENGTH OF THE MEMBER SHALL BE SCHEDULED AS SHOWN IN THE SCHEDULES ARE CLASS 'B' LABS.
 - LAP SPICES LISTED IN THE SCHEDULES SHALL BE USED WHEN SPACING DIFFERENT SIZE BARS.
 - LAP LENGTHS SPECIFICALLY DETAILED.
 - IN FIELD OF LAP LENGTHS SCHEDULED.
 - OF THE LAP SPICE SHOWN.
 - TOP BARS ARE HORIZONTAL BARS SO PLACED THAT 12" OR MORE OF THE LAP LENGTH IS ABOVE THE BEAM USE SCHEDULE 'B' FOR FIELD LENGTHS. BOTTOM BARS ARE HORIZONTAL BARS SO PLACED THAT 12" OR MORE OF THE LAP LENGTH IS BELOW THE BEAM USE SCHEDULE 'A' FOR FIELD LENGTHS.
 - THE SCHEDULES AND PLACING OF REINFORCING SHALL COMPLY WITH THE DETAILS ON THE DRAWINGS.
 - BUNDLED BAR SPICES.
 - LAP EACH OTHER.
 - INCREASE LAP LENGTH 50% FOR A 3 BAR BUNDLE.
 - INCREASE LAP LENGTH 25% FOR A 2 BAR BUNDLE.
 - LAP SPICED BARS SHALL NOT BE SPACED TRANSVERSELY FURTHER APART THAN 20% OF THE REQUIRED LAP LENGTH NOT MORE THAN 6'.



NOTES:

- THIS DRAWING INCLUDES COMPONENTS OF THE FACILITY THAT ARE EXEMPT FROM PERMITTING UNDER VARIOUS PROVISIONS OF LOCAL, STATE AND FEDERAL LAWS. ENGINEER'S RESPONSIBILITY IS LIMITED TO THE DESIGN AND CONSTRUCTION OF THE FACILITY AND NOT TO THE PERMITTING PROCESS AND EASE OF REVIEW ONLY, AND THEY ARE NOT INTENDED TO BECOME REGULATED COMPONENTS OF THE HAZARDOUS WASTE FACILITY.

SCALE: NONE

UNITS: DIMENSIONS ARE IN INCHES

REVISIONS:

NO.	DATE	DESCRIPTION
1	04/24/91	ISSUED FOR PLAN CHECK
2	06/24/91	REVISED PER PLAN CHECK
3	06/24/91	REVISED PER PLAN CHECK
4	06/24/91	REVISED PER PLAN CHECK
5	06/24/91	REVISED PER PLAN CHECK
6	06/24/91	REVISED PER PLAN CHECK
7	06/24/91	REVISED PER PLAN CHECK
8	06/24/91	REVISED PER PLAN CHECK
9	06/24/91	REVISED PER PLAN CHECK
10	06/24/91	REVISED PER PLAN CHECK
11	06/24/91	REVISED PER PLAN CHECK
12	06/24/91	REVISED PER PLAN CHECK
13	06/24/91	REVISED PER PLAN CHECK
14	06/24/91	REVISED PER PLAN CHECK
15	06/24/91	REVISED PER PLAN CHECK
16	06/24/91	REVISED PER PLAN CHECK
17	06/24/91	REVISED PER PLAN CHECK
18	06/24/91	REVISED PER PLAN CHECK
19	06/24/91	REVISED PER PLAN CHECK
20	06/24/91	REVISED PER PLAN CHECK
21	06/24/91	REVISED PER PLAN CHECK
22	06/24/91	REVISED PER PLAN CHECK
23	06/24/91	REVISED PER PLAN CHECK
24	06/24/91	REVISED PER PLAN CHECK
25	06/24/91	REVISED PER PLAN CHECK
26	06/24/91	REVISED PER PLAN CHECK
27	06/24/91	REVISED PER PLAN CHECK
28	06/24/91	REVISED PER PLAN CHECK
29	06/24/91	REVISED PER PLAN CHECK
30	06/24/91	REVISED PER PLAN CHECK
31	06/24/91	REVISED PER PLAN CHECK
32	06/24/91	REVISED PER PLAN CHECK
33	06/24/91	REVISED PER PLAN CHECK
34	06/24/91	REVISED PER PLAN CHECK
35	06/24/91	REVISED PER PLAN CHECK
36	06/24/91	REVISED PER PLAN CHECK
37	06/24/91	REVISED PER PLAN CHECK
38	06/24/91	REVISED PER PLAN CHECK
39	06/24/91	REVISED PER PLAN CHECK
40	06/24/91	REVISED PER PLAN CHECK
41	06/24/91	REVISED PER PLAN CHECK
42	06/24/91	REVISED PER PLAN CHECK
43	06/24/91	REVISED PER PLAN CHECK
44	06/24/91	REVISED PER PLAN CHECK
45	06/24/91	REVISED PER PLAN CHECK
46	06/24/91	REVISED PER PLAN CHECK
47	06/24/91	REVISED PER PLAN CHECK
48	06/24/91	REVISED PER PLAN CHECK
49	06/24/91	REVISED PER PLAN CHECK
50	06/24/91	REVISED PER PLAN CHECK
51	06/24/91	REVISED PER PLAN CHECK
52	06/24/91	REVISED PER PLAN CHECK
53	06/24/91	REVISED PER PLAN CHECK
54	06/24/91	REVISED PER PLAN CHECK
55	06/24/91	REVISED PER PLAN CHECK
56	06/24/91	REVISED PER PLAN CHECK
57	06/24/91	REVISED PER PLAN CHECK
58	06/24/91	REVISED PER PLAN CHECK
59	06/24/91	REVISED PER PLAN CHECK
60	06/24/91	REVISED PER PLAN CHECK
61	06/24/91	REVISED PER PLAN CHECK
62	06/24/91	REVISED PER PLAN CHECK
63	06/24/91	REVISED PER PLAN CHECK
64	06/24/91	REVISED PER PLAN CHECK
65	06/24/91	REVISED PER PLAN CHECK
66	06/24/91	REVISED PER PLAN CHECK
67	06/24/91	REVISED PER PLAN CHECK
68	06/24/91	REVISED PER PLAN CHECK
69	06/24/91	REVISED PER PLAN CHECK
70	06/24/91	REVISED PER PLAN CHECK
71	06/24/91	REVISED PER PLAN CHECK
72	06/24/91	REVISED PER PLAN CHECK
73	06/24/91	REVISED PER PLAN CHECK
74	06/24/91	REVISED PER PLAN CHECK
75	06/24/91	REVISED PER PLAN CHECK
76	06/24/91	REVISED PER PLAN CHECK
77	06/24/91	REVISED PER PLAN CHECK
78	06/24/91	REVISED PER PLAN CHECK
79	06/24/91	REVISED PER PLAN CHECK
80	06/24/91	REVISED PER PLAN CHECK
81	06/24/91	REVISED PER PLAN CHECK
82	06/24/91	REVISED PER PLAN CHECK
83	06/24/91	REVISED PER PLAN CHECK
84	06/24/91	REVISED PER PLAN CHECK
85	06/24/91	REVISED PER PLAN CHECK
86	06/24/91	REVISED PER PLAN CHECK
87	06/24/91	REVISED PER PLAN CHECK
88	06/24/91	REVISED PER PLAN CHECK
89	06/24/91	REVISED PER PLAN CHECK
90	06/24/91	REVISED PER PLAN CHECK
91	06/24/91	REVISED PER PLAN CHECK
92	06/24/91	REVISED PER PLAN CHECK
93	06/24/91	REVISED PER PLAN CHECK
94	06/24/91	REVISED PER PLAN CHECK
95	06/24/91	REVISED PER PLAN CHECK
96	06/24/91	REVISED PER PLAN CHECK
97	06/24/91	REVISED PER PLAN CHECK
98	06/24/91	REVISED PER PLAN CHECK
99	06/24/91	REVISED PER PLAN CHECK
100	06/24/91	REVISED PER PLAN CHECK

WESTATES CARBON ARIZONA, INC.

WESTATES CARBON LOS ANGELES, CA 90040

GENERAL NOTES & STANDARD DETAILS

PROJECT No. D-100601

SHEET S-2

SCALE: 1"=40'

DO NOT SCALE DRAWING

LOCATION: 2523 MUTAHAR ST. PARKER, AZ 85344

CUSTOMER: SIEMENS INDUSTRY, INC.

PROJECT No. D-100601

REVISION DESCRIPTION

REV.	DATE	DESCRIPTION	BY	CHK.
A1	3/16/12	NAME CHANGED TO SIEMENS INDUSTRY, INC.	JBE	KEM
REV.	DATE	REVISION DESCRIPTION	DRAWN	CHK'D
			JBE	KEM
			2/8/07	
			2/8/07	
			ENGR.	

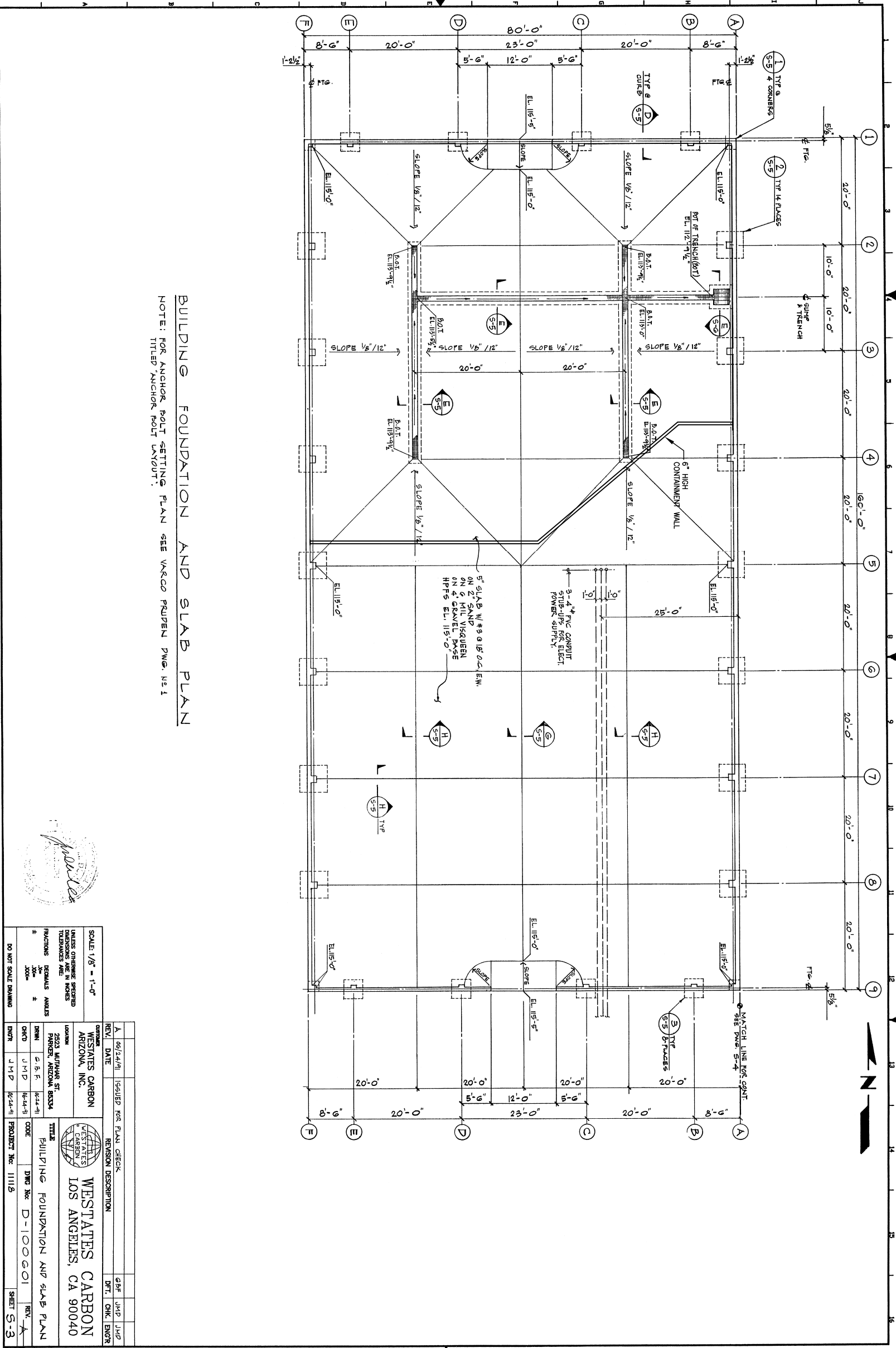
SIEMENS INDUSTRY, INC.

WAREHOUSE BUILDING

GENERAL NOTES & STANDARD DETAILS

PROJECT No. D-100601-S-2

REV. A1



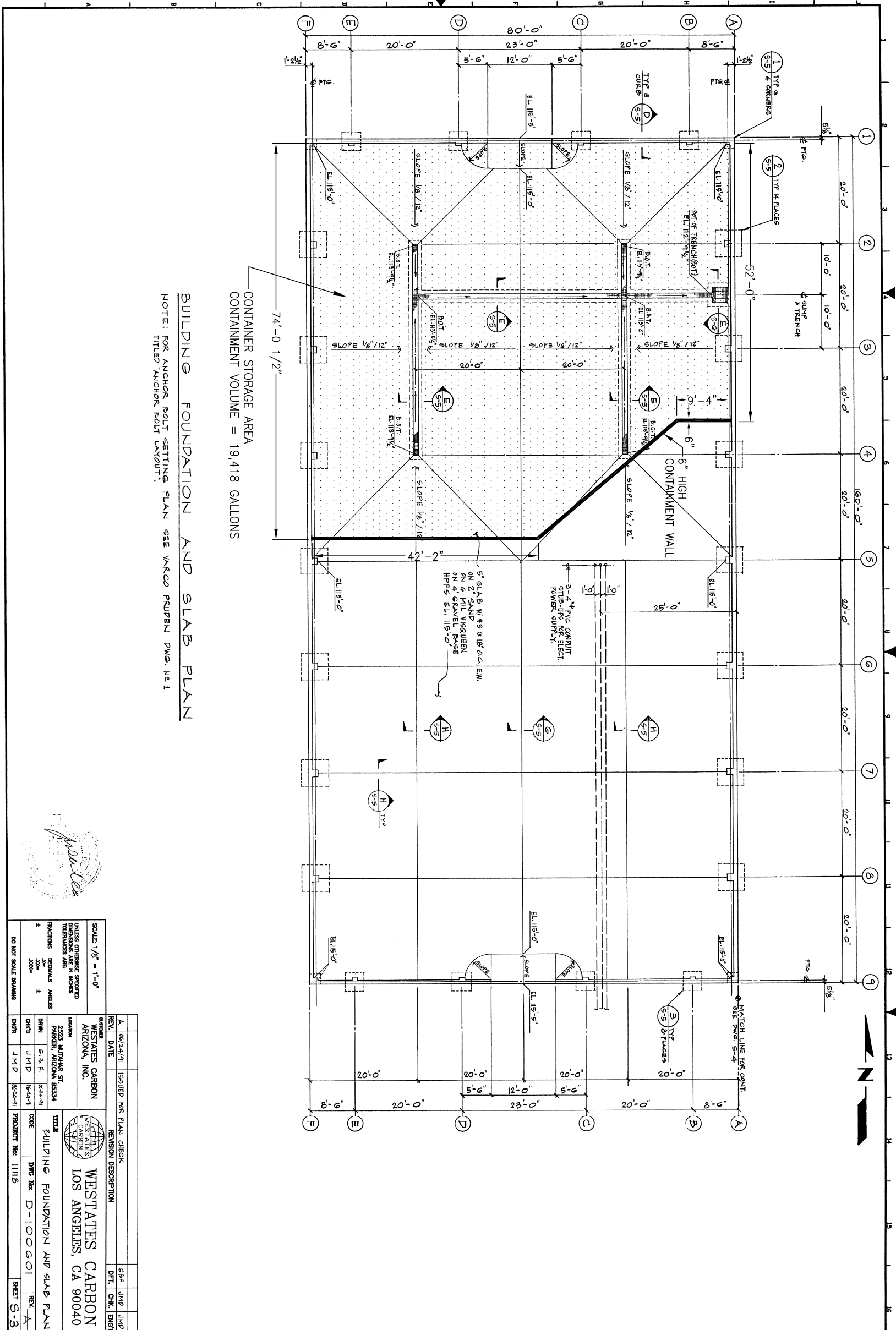
BUILDING FOUNDATION AND SLAB PLAN
 NOTE: FOR ANCHOR BOLT SETTING PLAN SEE VACCO PRUDEN DWG. N-1
 TITLED ANCHOR BOLT LAYOUT.



SCALE: 1/8" = 1'-0"	DO NOT SCALE DRAWING
UNLESS OTHERWISE SPECIFIED DIMENSIONS ARE IN INCHES FRACTIONS DENOMINATORS ARE 16, 32, 64, 128	
DATE: 06/24/11	DESIGNED FOR: PLAN CHECK
REVISION DESCRIPTION	DATE
1. WESTATES CARBON ARIZONA, INC.	
2. WESTATES CARBON ARIZONA, INC.	
3. WESTATES CARBON ARIZONA, INC.	
4. WESTATES CARBON ARIZONA, INC.	
5. WESTATES CARBON ARIZONA, INC.	
6. WESTATES CARBON ARIZONA, INC.	
7. WESTATES CARBON ARIZONA, INC.	
8. WESTATES CARBON ARIZONA, INC.	
9. WESTATES CARBON ARIZONA, INC.	
10. WESTATES CARBON ARIZONA, INC.	
11. WESTATES CARBON ARIZONA, INC.	
12. WESTATES CARBON ARIZONA, INC.	
13. WESTATES CARBON ARIZONA, INC.	
14. WESTATES CARBON ARIZONA, INC.	
15. WESTATES CARBON ARIZONA, INC.	
16. WESTATES CARBON ARIZONA, INC.	
17. WESTATES CARBON ARIZONA, INC.	
18. WESTATES CARBON ARIZONA, INC.	
19. WESTATES CARBON ARIZONA, INC.	
20. WESTATES CARBON ARIZONA, INC.	
21. WESTATES CARBON ARIZONA, INC.	
22. WESTATES CARBON ARIZONA, INC.	
23. WESTATES CARBON ARIZONA, INC.	
24. WESTATES CARBON ARIZONA, INC.	
25. WESTATES CARBON ARIZONA, INC.	
26. WESTATES CARBON ARIZONA, INC.	
27. WESTATES CARBON ARIZONA, INC.	
28. WESTATES CARBON ARIZONA, INC.	
29. WESTATES CARBON ARIZONA, INC.	
30. WESTATES CARBON ARIZONA, INC.	
31. WESTATES CARBON ARIZONA, INC.	
32. WESTATES CARBON ARIZONA, INC.	
33. WESTATES CARBON ARIZONA, INC.	
34. WESTATES CARBON ARIZONA, INC.	
35. WESTATES CARBON ARIZONA, INC.	
36. WESTATES CARBON ARIZONA, INC.	
37. WESTATES CARBON ARIZONA, INC.	
38. WESTATES CARBON ARIZONA, INC.	
39. WESTATES CARBON ARIZONA, INC.	
40. WESTATES CARBON ARIZONA, INC.	
41. WESTATES CARBON ARIZONA, INC.	
42. WESTATES CARBON ARIZONA, INC.	
43. WESTATES CARBON ARIZONA, INC.	
44. WESTATES CARBON ARIZONA, INC.	
45. WESTATES CARBON ARIZONA, INC.	
46. WESTATES CARBON ARIZONA, INC.	
47. WESTATES CARBON ARIZONA, INC.	
48. WESTATES CARBON ARIZONA, INC.	
49. WESTATES CARBON ARIZONA, INC.	
50. WESTATES CARBON ARIZONA, INC.	
51. WESTATES CARBON ARIZONA, INC.	
52. WESTATES CARBON ARIZONA, INC.	
53. WESTATES CARBON ARIZONA, INC.	
54. WESTATES CARBON ARIZONA, INC.	
55. WESTATES CARBON ARIZONA, INC.	
56. WESTATES CARBON ARIZONA, INC.	
57. WESTATES CARBON ARIZONA, INC.	
58. WESTATES CARBON ARIZONA, INC.	
59. WESTATES CARBON ARIZONA, INC.	
60. WESTATES CARBON ARIZONA, INC.	
61. WESTATES CARBON ARIZONA, INC.	
62. WESTATES CARBON ARIZONA, INC.	
63. WESTATES CARBON ARIZONA, INC.	
64. WESTATES CARBON ARIZONA, INC.	
65. WESTATES CARBON ARIZONA, INC.	
66. WESTATES CARBON ARIZONA, INC.	
67. WESTATES CARBON ARIZONA, INC.	
68. WESTATES CARBON ARIZONA, INC.	
69. WESTATES CARBON ARIZONA, INC.	
70. WESTATES CARBON ARIZONA, INC.	
71. WESTATES CARBON ARIZONA, INC.	
72. WESTATES CARBON ARIZONA, INC.	
73. WESTATES CARBON ARIZONA, INC.	
74. WESTATES CARBON ARIZONA, INC.	
75. WESTATES CARBON ARIZONA, INC.	
76. WESTATES CARBON ARIZONA, INC.	
77. WESTATES CARBON ARIZONA, INC.	
78. WESTATES CARBON ARIZONA, INC.	
79. WESTATES CARBON ARIZONA, INC.	
80. WESTATES CARBON ARIZONA, INC.	
81. WESTATES CARBON ARIZONA, INC.	
82. WESTATES CARBON ARIZONA, INC.	
83. WESTATES CARBON ARIZONA, INC.	
84. WESTATES CARBON ARIZONA, INC.	
85. WESTATES CARBON ARIZONA, INC.	
86. WESTATES CARBON ARIZONA, INC.	
87. WESTATES CARBON ARIZONA, INC.	
88. WESTATES CARBON ARIZONA, INC.	
89. WESTATES CARBON ARIZONA, INC.	
90. WESTATES CARBON ARIZONA, INC.	
91. WESTATES CARBON ARIZONA, INC.	
92. WESTATES CARBON ARIZONA, INC.	
93. WESTATES CARBON ARIZONA, INC.	
94. WESTATES CARBON ARIZONA, INC.	
95. WESTATES CARBON ARIZONA, INC.	
96. WESTATES CARBON ARIZONA, INC.	
97. WESTATES CARBON ARIZONA, INC.	
98. WESTATES CARBON ARIZONA, INC.	
99. WESTATES CARBON ARIZONA, INC.	
100. WESTATES CARBON ARIZONA, INC.	

NOTES:
 1. THIS DRAWING INCLUDES COMPONENTS OF THE FACILITY THAT ARE EXEMPT FROM PERMITTING UNDER VARIOUS PROVISIONS OF ROCK DATA RELATED TO THESE COMPONENTS AS PERMITTED UNDER THE PROGRESS AND EAST OF REVIEW ONLY AND THEY ARE NOT INTENDED TO BECOME REGULATED COMPONENTS OF THE HAZARDOUS WASTE FACILITY.

PROJECT NO.	2523 MUTAHAR ST. PARKER, AZ 85344	INDUSTRY, INC.	SIEMENS INDUSTRY, INC.	WAREHOUSE BUILDING
DATE	2/01/07	INDUSTRY, INC.	SIEMENS INDUSTRY, INC.	BUILDING FOUNDATION AND SLAB PLAN
REVISION	DATE	BY	CHK'D	ENGR
B1	3-16-12	JBE	KEM	
B	2-21-07	JBE	KEM	
A	2/01/07	JBE	KEM	
NAME CHANGED TO SIEMENS INDUSTRY, INC.				
ADD CONTAINMENT WALL TO WESTATES DRAWING				
REVISION DESCRIPTION				
DRAWN				
CHK'D				
ENGR				
PART NO.				
DWG No. D100601-S-3				
REV. B1				



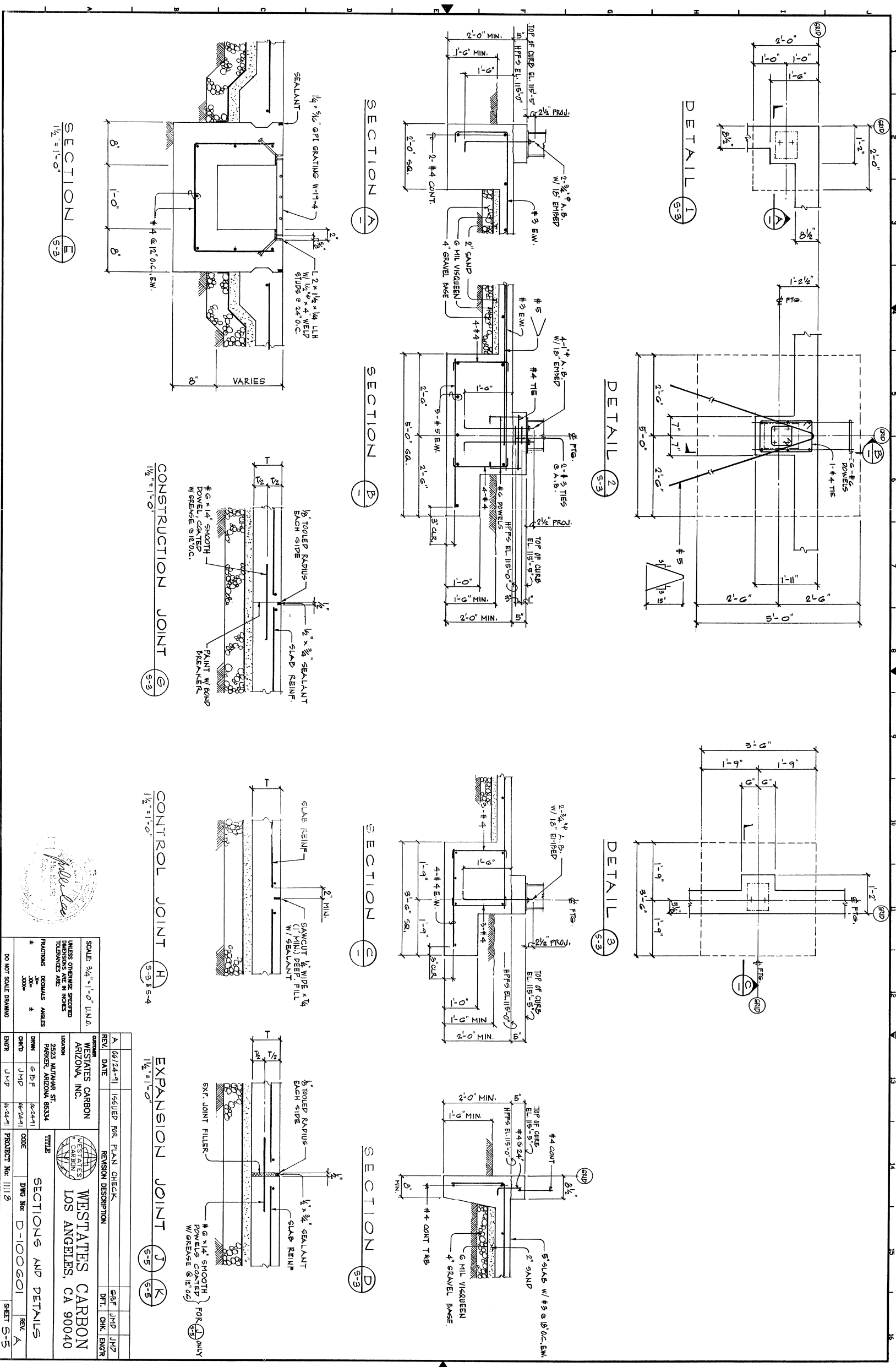
CONTAINER STORAGE AREA
CONTAINMENT VOLUME = 19,418 GALLONS

BUILDING FOUNDATION AND SLAB PLAN

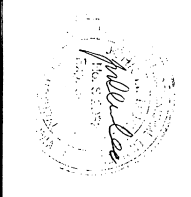
NOTE: FOR ANCHOR BOLT SETTING PLAN SEE VACCO RUPDEN DWG. NO. 1
TITLED 'ANCHOR BOLT LAYOUT'.

SCALE: 1/8" = 1'-0"	DATE: 06/24/11	DESIGNED FOR: PLAN CHECK	DRW: JMD
UNLESS OTHERWISE SPECIFIED DIMENSIONS ARE IN INCHES	REVISION DATE	REVISION DESCRIPTION	DFT: CHK ENGR
FRACTIONS: 3/16, 1/4, 3/8, 1/2, 5/8, 3/4, 7/8	REV: A	WESTATES CARBON ARIZONA, INC.	2523 MUTAHAR ST. PARKER, ARIZONA 85344
DO NOT SCALE DRAWING	CHK'D: JMD	TITLE: BUILDING FOUNDATION AND SLAB PLAN	LOCATION: 2523 MUTAHAR ST. PARKER, AZ 85344
	ENGR: JMD	PROJECT No: 11115	DWG No: D-100601
			SHEET 5-3

PLAT SCALE: 1" = 40'	PROJECT No.	NAME CHANGED TO SIEMENS INDUSTRY, INC.	DATE	2/01/07	DRW	JBE
DO NOT SCALE DRAWING	REVISION No.	ADD CONTAINMENT WALL TO WESTATES DRAWING	DATE	2/01/07	CHK'D	KEM
THIS DRAWING IS THE PROPERTY OF SIEMENS INDUSTRY, INC. IT IS TO BE USED ONLY FOR THE PROJECT AND SITE SPECIFICALLY IDENTIFIED HEREIN. NO PARTS OF THIS DRAWING ARE TO BE REPRODUCED OR TRANSMITTED IN ANY FORM OR BY ANY MEANS, ELECTRONIC OR MECHANICAL, INCLUDING PHOTOCOPYING, RECORDING, OR BY ANY INFORMATION STORAGE AND RETRIEVAL SYSTEM, WITHOUT THE EXPRESS WRITTEN PERMISSION OF SIEMENS INDUSTRY, INC.	CUSTOMER:	SIEMENS INDUSTRY, INC.	LOCATION:	2523 MUTAHAR ST. PARKER, AZ 85344	TITLE:	WAREHOUSE BUILDING CONTAINER STORAGE AREA LAYOUT & VOLUME
	ENGR:				PART No.	DWG No. D100601-S-3V
					REV	B1



SCALE: 3/4" = 1'-0" UNL.	UNLESS OTHERWISE SPECIFIED DIMENSIONS ARE IN INCHES FRACTIONS DECIMALS ANGLES
DO NOT SCALE DRAWING	
DATE: 06/24-11	DESIGNED FOR: PLAN CHECK
REVISION DESCRIPTION	DFT. CHK. ENGR
WESTATES CARBON ARIZONA, INC.	
2523 MUYAHAR ST. PARKER, ARIZONA 85334	
TITLE: WESTATES CARBON LOS ANGELES, CA 90040	
SECTION AND DETAILS	
DRG. NO. D-100601	REV. A
PROJECT No. 11118	SHEET S-5



NOTES:

- THIS DRAWING INCLUDES COMPONENTS OF THE FACILITY THAT ARE EXEMPT FROM PERMITTING UNDER VARIOUS PROVISIONS OF ROCA. DATA RELATED TO THESE COMPONENTS IS PROVIDED FOR INFORMATIONAL PURPOSES AND EASE OF REVIEW ONLY, AND THEY ARE NOT INTENDED TO BECOME REGULATED COMPONENTS OF THE HAZARDOUS WASTE FACILITY.

PROJECT No.	2523 MUYAHAR ST. PARKER, AZ 85344	NAME CHANGED TO SIEMENS INDUSTRY, INC.
DATE	3-16-12	REVISION DESCRIPTION
CUSTOMER	SIEMENS INDUSTRY, INC.	
DRAWN	JBE	2/8/07
CHK'D	KEM	2/8/07
ENGR.		
PART No.		WAREHOUSE BUILDING SECTIONS AND DETAILS
DWG No.	D100601-S-5	REV. A1

