



MODULAB® HIGH FLOW WATER PURIFICATION SYSTEM

Modular Polishing System

Evoqua Water Technologies' modular polishing system delivers up to 14 liters per minute of ultra pure, Type 1 quality water at the point-of-use. Whether you need water for media or reagent preparation or for micro-biological buffer preparation, our system can provide you with water whenever you need it.

General Description

The MODULAB® High Flow water system is a modular, point-of-use polishing system which consistently provides high quality Type 1 water (up to 18.2 MW - cm @ 25 °C) with flow rates up to 14 lpm (3.7 gpm) of pretreated water.

The MODULAB system is a wall-mountable unit that requires a minimal footprint for installation.

The system is delivered fully assembled and functionally tested. Cartridges will need to be purchased separately and should be installed after the system has been safely mounted.

The system is offered in three configurations:

- 1) a low TOC model
- 2) a low bacteria model
- 3) a low pyrogen model

Features and Benefits

- Type 1 water quality (up to 18.2 megohm)
- Flow rates up to 14 lpm (3.7 gpm)
- Dual Wavelength UV sterilization
- High capacity, low TOC cartridges
- Simple cartridge / filter change-out
- Easy Sanitization
- Space saving wall mountable design

SYSTEM SPECIFICATIONS

Min Flow Rate	2 lpm (0.5gpm)
Max Flow Rate	Up to 14 lpm (3.7 gpm)
Resistivity	Up to 18.2 Meg Ω -cm @ 25 °C
Total Organic Carbon (TOC)	< 15 ppb *
Heavy Metals	< 0.01 ppb
Bacteria	< 10 cfu/ml **
Endotoxin	< 0.05 EU/ml ***

* With Organic Removal Cartridge installed and RO (reverse osmosis) feed water.

** With Sub-micron filter installed as specified.

*** With UF (ultrafiltration) Filter Cartridge installed as specified.

Note: Specifications are based on a RO feed.

GENERAL SPECIFICATIONS

Minimum feed pressure	25 psig
Maximum feed pressure	60 psig
Minimum feed temperature	41°F (5°C)
Maximum feed temperature	86°F (30°C)

PHYSICAL SPECIFICATIONS

Length, in (cm)	43 (109)
Depth, in (cm)	8.5 (22)
Height, in (cm)	39 (100)*
UV Bulb Service Clearance, in (cm)	6 (16) Front

* Requires an additional 4" in height to allow changing of cartridges.

UTILITY REQUIREMENTS

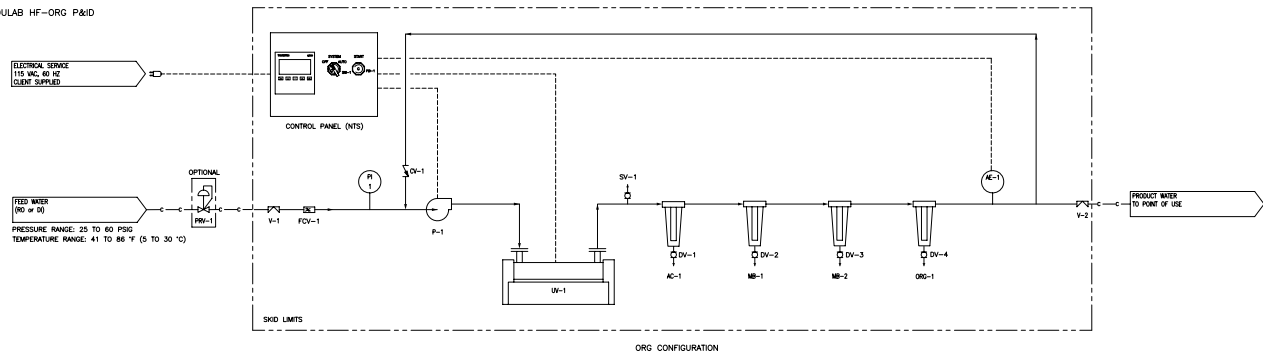
Electrical	
Low voltage service – Single Phase	120 VAC
Breaker required per Code	15 AMP
Feed Water	RO or DI water

STANDARD PRODUCT ORDERING INFORMATION

Model Number	Item Number	Description
MHF0ORG1	W2T196103	Modulab High Flow System Low TOC
MHF0SMF2	W2T196104	Modulab High Flow System Bio Model
MHF0SMF5	W2T196105	Modulab High Flow System UF Model

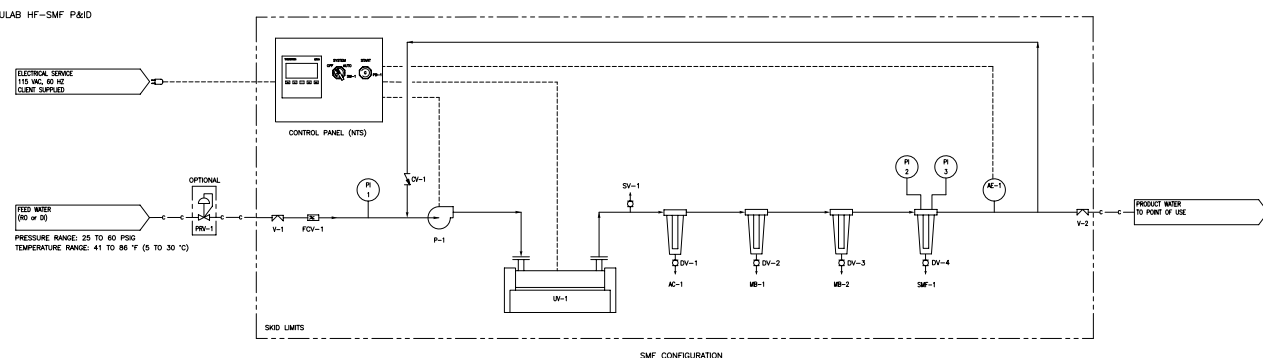
Cartridge Kits	Item Number	Description
MLHFUF05KIT	W3T184568	Cartridge Kit for UF Model
MLHFBIO2KIT	W3T185415	Cartridge Kit for BIO model
MLHFTOC1KIT	W3T185258	Cartridge Kit for TOC Model
FCUF020S2	W2T149002	0.2 µm, Filter Cartridge
FCUF020S05	W2T149000	0.05 µm, Filter Cartridge

MODULAB HF-ORG P&ID



ORG CONFIGURATION

MODULAB HF-SMF P&ID



SMF CONFIGURATION



181 Thorn Hill Road, Warrendale, PA 15086

+1 (800) 466-7873 (toll-free)

+1 (978) 614-7233 (toll)

www.evoqua.com

Modulab is a trademark of Evoqua, its subsidiaries or affiliates in some countries.

All information presented herein is believed reliable and in accordance with accepted engineering practices. Evoqua makes no warranties as to the completeness of this information. Users are responsible for evaluating individual product suitability for specific applications. Evoqua assumes no liability whatsoever for any special, indirect or consequential damages arising from the sale, resale or misuse of its products.

© 2016 Evoqua Water Technologies LLC

Subject to change without notice

HPS-MODULABHF-DS-0716